



DESIGNED FOR RECOVERY



PRECISION IN ORTHOPEDIC INNOVATION

ADVANCED ORTHOPEDIC IMPLANTS & SURGICAL SOLUTIONS

ABOUT ZEXA MEDISYS

At Zexa Medisys, we are committed to delivering high-quality orthopedic implant solutions that support surgeons, hospitals, and patients with reliable medical innovation.

With a focus on precision engineering, safety, and clinical excellence, we provide a wide range of orthopedic implants designed to meet modern surgical requirements and international quality standards.

Our commitment lies in improving mobility, accelerating recovery, and enhancing patient outcomes through dependable implant technologies.

From trauma care to advanced orthopedic procedures, Zexa Medisys stands as a trusted partner in healthcare excellence.

OUR COMMITMENT

Continuous Product Innovation

International Quality Standards

Reliable Surgical Support

Long-Term Healthcare Partnerships

Better Mobility for Every Patient





OUR MISSION

- To provide world-class orthopedic implant solutions through innovation, quality manufacturing, and ethical healthcare practices that improve patient lives globally.



OUR VISION

- To become a trusted global leader in orthopedic healthcare by delivering advanced implant technologies that redefine surgical excellence and patient recovery.



OUR CORE VALUES

- Quality & Precision
- Innovation Driven
- Patient-Centric Approach
- Ethical Practices
- Trusted Partnerships



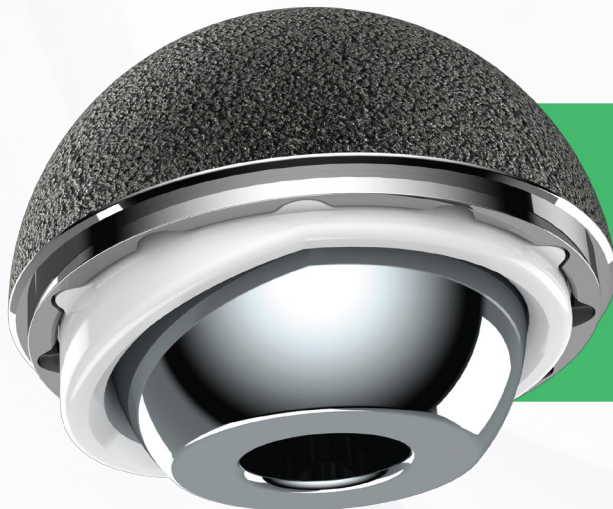
ENDURAX™

ACETABULAR HIP SYSTEM

ACETABULAR SHELL & LINER



ONE SHELL
MANY POSSIBILITIES



UNCEMENTED THR &
MODULAR
DUAL MOBILITY HIP SYSTEM

ENDURAX™ ACETABULAR SHELL – BIOACTIV™ 3D TRABECULAR

Sizes : 40 TO 70 MM (2 MM INCREMENTS)
Variant : CLUSTER HOLE & MULTIHOLE
Material : TITANIUM (Ti6Al4V)
Surface : 3D PRINTED LATTICE STRUCTURE
Fixation : UNCEMENTED



Sizes : 40 TO 62 MM (2 MM INCREMENTS)
Variant : CLUSTER HOLE & MULTIHOLE
Material : TITANIUM (Ti6Al4V)
Surface : Ti POROUS COATED
Fixation : UNCEMENTED



ENDURAX™ ACETABULAR THR LINER

Sizes : AS PER SHELL COMPATIBILITY
Variant : NEUTRAL & 15DEG LIPPED
Material : UHMWPE/ HXLPE / VITAMIN -E



COMPATIBILITY CHART (THR)

SHELL SIZE	MATCHED THR LINER	MATCHED HEAD
40* A	32* A	22.22
42* A	32* A	22.22
44 B	36 B	28
46 B	36 B	28
48 C	40 C	32
50 C	40 C	32
52 D	44 D	36
54 D	44 D	36
56 E	48 E	36
58 E	48 E	36
60 F	52 F	36
62 F	52 F	36
64* G	56* G	36/40
66* G	56* G	36/40
68* H	60* H	38/40
70* H	60* H	38/40

• Represents Special Sizes available on special request.



ENDURAX™ MODULAR DUAL MOBILITY METAL LINER

Sizes : AS PER SHELL COMPATIBILITY
Material : COBALT CHROMIUM (CO.CR)
Surface : HIGHLY POLISHED



ENDURAX™ MODULAR DUAL MOBILITY POLY INSERT

Sizes : AS PER METAL LINER COMPATIBILITY
Material : UHMWPE/ HXLPE/ VITAMIN-E



COMPATIBILITY CHART (MDM)

SHELL SIZE	MATCHED METAL LINER	MATCHED POLY INSERT	MATCHED HEAD
40* A	--	--	--
42* A	--	--	--
44 B	36 B	32 B	22.22
46 B	36 B	32 B	22.22
48 C	40 C	36 C	22.22
50 C	40 C	36 C	22.22
52 D	44 D	40 D	28
54 D	44 D	40 D	28
56 E	48 E	44 E	28
58 E	48 E	44 E	28
60 F	52 F	48 F	28
62 F	52 F	48 F	28
64* G	56* G	52* G	28
66* G	56* G	52* G	28
68* H	60* H	56* H	28
70* H	60* H	56* H	28

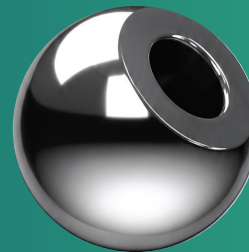


ZTATM CERAM™ CERAMIC FEMORAL HEADS (PINK & WHITE)

T MOD™ Z SERIES : METAL FEMORAL HEADS



FEMORAL HEAD SIZE	ZTA™ CERAMIC	TMOD™-Z (COBALT CHROMIUM)	TMOD™ (SS)
22(+4)	--	✓	✓
22(+4)	--	✓	✓
28(-3.5)	✓	✓	✓
28(0)	✓	✓	✓
28(+3.5)	✓	✓	✓
32(-4)	✓	✓	✓
32(0)	✓	✓	✓
32(-4)	✓	✓	✓
32(0)	✓	✓	✓
32(+4)	✓	✓	✓
32(+7)	✓	✓	✓
36(-4)	✓	✓	✓
36(0)	✓	✓	✓
36(+4)	✓	✓	✓
36(+8)	✓	✓	✓



T MOD™ Z SERIES
METAL FEMORAL HEADS



ZTATM CERAM™ PINK
ZIRCONIA THOUGHENED
CERAMIC FEMORAL HEADS



ZTATM CERAM™ WHITE
ZIRCONIA THOUGHENED
CERAMIC FEMORAL HEADS



ZTATM CERAM™ WHITE REVISION 16/18 TAPER ZIRCONIA THOUGHENED CERAMIC FEMORAL HEADS

REVISION FEMORAL HEAD SIZE 16/18 TAPER	ZTA™ CERAMIC
28	✓
32	✓
36	✓
40	✓

ADAPTER SLEEVE COMES IN 4 OFFSET S, M, L, XL



MOBILUXX™ CEMENTED DUAL MOBILITY CUP

- SIZES** : 39 TO 63 MM
(IN 2MM INCREMENTS)
- MATERIAL** : STAINLESS STEEL
(IMPLANTABLE GRADE)
- SURFACE** : HIGHLY POLISHED

COMPATIBILITY CHART



*Represents Special Sizes Available On Special Request.

SHELL SIZE	MATCHED POLY INSERT	MATCHED HEAD
39* A	39* A	22.22
41* B	41* B	22.22
43 C	43 C	22.22
45 D	45 D	22.22
47 E	47 E	22.22
49 F	49 F	28
51 G	51 G	28
53 H	53 H	28
55 I	55 I	28
57 J	57 J	28
59 K	59 K	28
61 L	61 L	28
63 M*	63 M*	28

ALL POLY CEMENTED CUP



SIZES : 40 TO 64 MM (IN 2MM INCREMENTS)

Material : UHMWPE / HXLPE

THR CUP SIZE	MATCHED HEAD SIZE
40*	22.22
42	28
44	28
46	28
48	28
50	32
52	32
54	32
56	32
58*	32
60*	32
62*	32
64*	32

BIPOLAR SHELL -3



SHELL SIZE	MATCHED HEAD SIZE
37	22.22
39	22.22
41	22.22
43	28
45	28
47	28
49	28
51	28
53	28
55	28

SIZES : 37 TO 55 MM (IN 2MM INCREMENTS)

Material : SS + UHMWPE / CO.CR+UHMWPE

**ATIX™ bioActiv™ HA
UNC STEM
TAPER: 12/14
Sizes: 6,8,9,10,11,12,13,14,15,16*,17*,18*
Material: Titanium (Ti6Al4V)
Surface: Fully HA Coated
Available Angle: 135 & 125 deg
FIXATION UNCEMENTED**



**PRO-HIPT™ bioActiv™
Porous UNC STEM
TAPER: 12/14
Sizes: S0, 0, 1, 2, 3, 4, 5
Material: Titanium (Ti6Al4V)
Surface Proximally Porous Coated
Available Angle: 132 deg
FIXATION: UNCEMENTED**



**Revision Stem
Material: Titanium Alloy
Stem Length 190mm
Neck Angle 135°**



DLXTM CEMENTED STEM

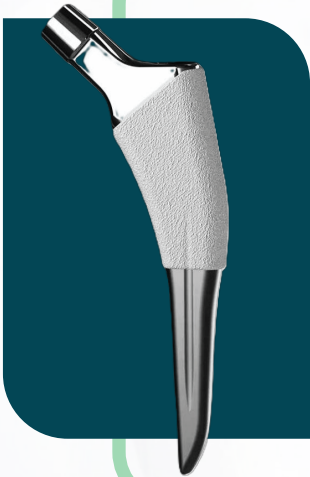
Sizes: S,M,L,EXL

Material: Stainless Steel (Implant Grade)

Surface: Highly Polished

Available Angle: 135 deg

FIXATION: CEMENTED



Mini Stem

Material: Titanium Alloy

Ti+HA coating, HA coating

Neck Angle 130°

iTan™ CALCAR STEM

Sizes: XS,S,M,L

Material: Stainless Steel (Implant Grade)

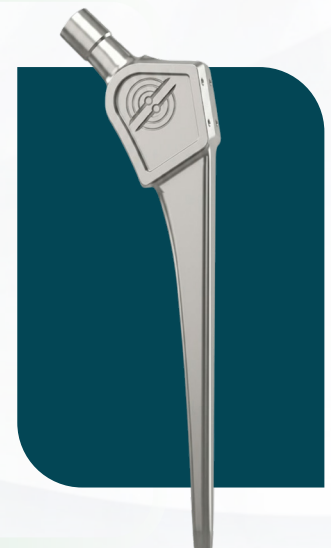
Surface: Highly Polished

Available Angle : 135 deg

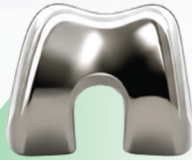
FIXATION CEMENTED

REVISION LONG STEMS ALSO AVAILABLE

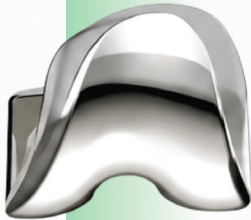
IN THIS DESIGN LENGTH 200, 250



IREJOY™ P1 PRIMARY KNEE



**CONSISTENT CONGRUENT
GEOMETRY ENABLES FULL
FEMORAL FLEXIBILITY**



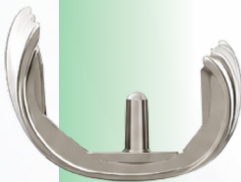
**PROGRESSIVE DESIGN 2MM NP
AND WL INCREMENTS TO
PROVIDE A COMPREHENSIVE
SIZING SOLUTION**



SMALL BOX DESIGN



**- UHMWPE
- XLPE
- XLPE VITAMIN-E
BEARING MATERIAL OPTIONS**



**NARROWER ANTERIOR FLANGE AS
COMPARED TO TRADITIONAL KNEE
PROSTHESIS DESIGN, TO REDUCE BONY
OVERHANG.**



**OPTIMIZED INSERT
LOCKING MECHANISM
REDUCES MICROMOTIONS**



**HIGH FLEXION DESIGN UPTO
145 DEG. WITH PRIMARY
BONE CUTS**

IREJOY™ P1 PRIMARY KNEE

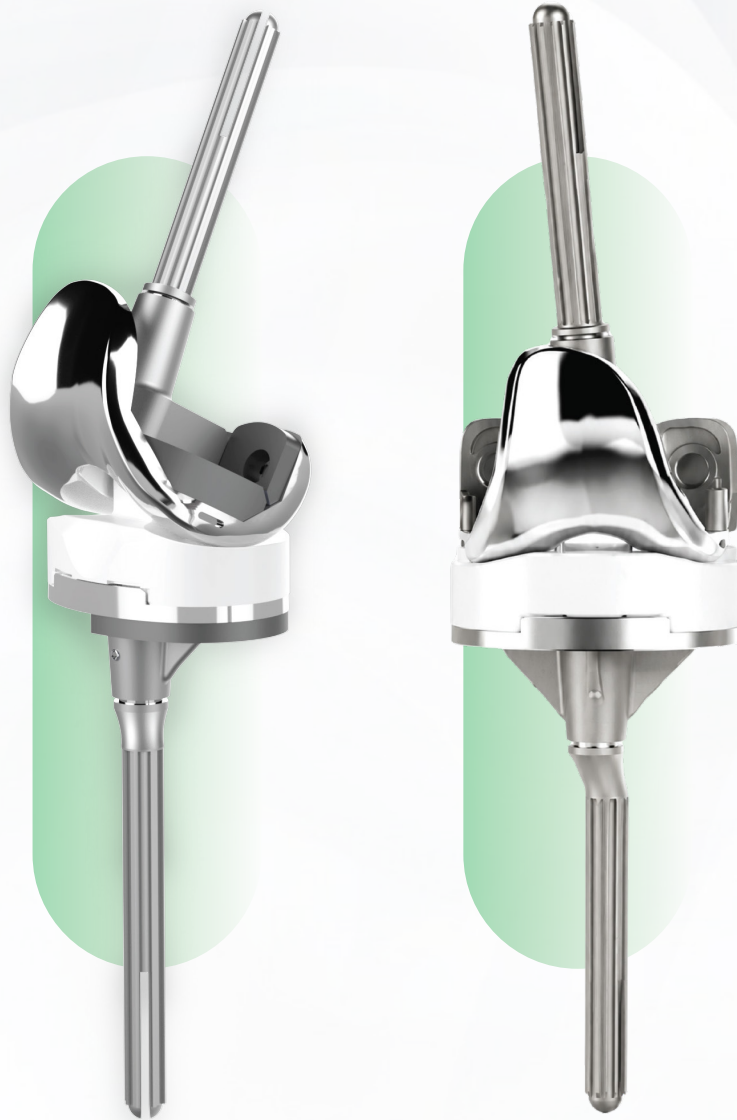


**FEMORAL COMPONENT
(SIZE : 1 TO 9)**

**FULLY INTERCHANGABLE BETWEEN
FEMORAL COMPONENT AND INSERT**

TIBIAL BEARING		#1	#2	#4	#6
TIBIAL TRAY	#1	0			
	#2		0		
	#3		0		
	#4			0	
	#5			0	
	#6				0
	#7				0

IREJOY™ P1 REVISION CCK KNEE



**FEMORAL COMPONENT
(SIZE : 1 TO 9)**

**FULLY INTERCHANGABLE BETWEEN
FEMORAL COMPONENT AND INSERT**

TIBIAL BEARING		#1	#2	#4	#6
TIBIAL TRAY	#1	0			
	#2		0		
	#3		0		
	#4			0	
	#5			0	
	#6				0
	#7				0

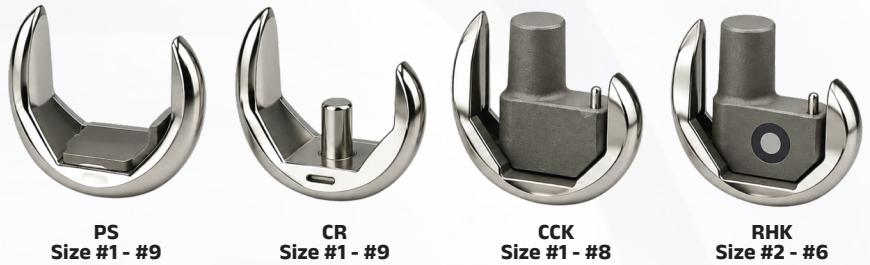
IREJOY™ P1 ROTATING HINGE KNEE



**FEMORAL COMPONENT
(SIZE : 1 TO 9)**

**FULLY INTERCHANGABLE BETWEEN
FEMORAL COMPONENT AND INSERT**

TIBIAL BEARING		#1	#2	#4	#6
TIBIAL TRAY	#1	0			
	#2		0		
	#3		0		
	#4			0	
	#5			0	
	#6				0
	#7				0



SIZE	#1	#2	#3	#4	#5	#6	#7	#8
A/P(MM)	55	57	59	61	63	66	68	72
M/L(MM)	59	61	64	66	68	71	73	78



SIZE	#1	#2	#3	#4	#5	#6	#7
A/P(MM)	38	41	43	46	48	51	53
M/L(MM)	59	63	67	71	75	79	83



PS
Size 1,2,3,6#



CR
Size 1,2,3,6#



RP
Size 1,2,3,6#



CCK
Size 1,2,3,6#
Thickness :
10,12,14,16,18,20MM



RHK
Size 2,3,4,5,6#
Thickness :
14,16,18,20,22MM

THICKNESS 10, 12, 14, 16MM



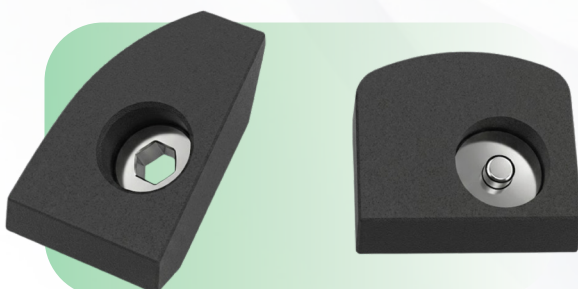
SIZE	40	80	120	160
10	✓	✓	✓	✓
11	✓	✓	✓	✓
12	✓	✓	✓	✓
13	✓	✓	✓	✓
14	✓	✓	✓	✓
15	✓	✓	✓	✓
16	✓	✓	✓	✓
18	✓	✓	✓	✓

AVAILABLE OFFSET : 0MM, 2.5MM, 5MM

***BLUE HIGHLIGHTED SIZE ONLY
AVAILABLE IN 2.5MM & 5MM OFFSET**

***PINK HIGHLIGHTED SIZE ONLY
AVAILABLE IN 0MM OFFSET.**

FEMORAL AUGMENTS



DISTAL FEMOTAL AUGMENTS

LM, RL, LL, RM 5/10/15 MM

SIZE : #1 - #9

POSTERIOR FEMORAL AUGMENTS

5/10 MM

SIZE : #1 - #9



TRIBAL AUGMENTS

L/R

5/10/15 MM

SIZE : #1 - #7



TRIBIAL CONE

SIZE : #1 - #4



PATELLA

SIZE :

28*8 MM

30*9 MM

34*9 MM



IREJOY™ SV2 PRIMARY KNEE

			FEMORAL COMPONENT				
TIBIAL TRAY	TIBIAL BEARING	#0	#1	#2	#3	#4	#5
#0	#0	0	0				
#1	#1	0	0	0			
#2	#2		0	0	0		
#3	#3			0	0	0	
#4	#4				0	0	0
#5	#5					0	0

FEMORAL COMPONENT

SIZE	#0	#1	#2	#3	#4	#5
A/P(MM)	53	56	59	62	65.5	70
M/L(MM)	57	59.5	62.5	66	70.5	73.5

TIBIAL COMPONENT

SIZE	#0	#1	#2	#3	#4	#5
A/P(MM)	41	43	45	47	50	54
M/L(MM)	61	64	67	71	75	81

*Patella and Extension Components are also available for these design.

A person in a white lab coat is using a surgical instrument to work on a knee model. The model is a yellowish, anatomical representation of a knee joint. The person is holding the model with one hand and the instrument with the other. In the background, another person is holding a tray with several small, metallic implants. The scene is set in a clinical or laboratory environment. The entire image has a teal color overlay.

ADVANCED IMPLANTS FOR BETTER MOVEMENT



ZEXA
M E D I S Y S

Gondaliya Rashmin +91 95122 12262

Gondaliya Jaydeep +91 96243 42014

zexamedisys@gmail.com

G - 80 The Palladium Mall, Near Yogichowk, Surat - 395010